

CHERRY ORCHARD PRIMARY ACADEMY

SAFEGUARDING TEAM

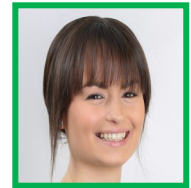
Mrs Julie Forsythe (Principal)
Designated Safeguarding Lead



Mrs Sandra Foxwell (Assistant Principal)
Deputy Safeguarding Lead



Mrs Emma Newton (Assistant Principal)
Deputy Safeguarding Lead



Mrs Sheena Williams (FLO/Extended schools)
Deputy Safeguarding Lead



Miss Rachel Pilcher (Nursery Manager)
Deputy Safeguarding Lead



Miss Aimee Boswell (Teacher)
Deputy Safeguarding Lead



Mrs Vicki Adams (SENCo)
Deputy Safeguarding Lead



If you have a concern about a child, please report this to the Safeguarding lead as a matter of urgency.

***If a child is in immediate danger, and you cannot get in contact with DSL, you must call the
Central Referral Unit on: 03000 41 11 11***

***Urgent child protection issue outside of office hours: Call the Central
Duty Out of Hours Number: 03000 41 91 91***

***If you have a concern about a member of staff you need to speak to the LADO Team. You can contact the LADO
Team by phone or email, contact number: 03000 410 888 Email: kentchildrenslado@kent.gov.uk***

***Please remember the 5 R's!
Recognise, Respond, Report, Record, Refer***